

PUNTA MAJAGUA

CAP CANA, R.D.

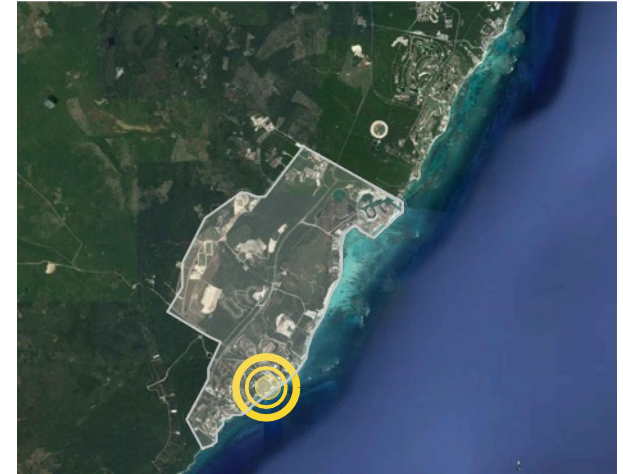


CARIBE

LATINOAMERICA



REPUBLICA DOMINICANA



FUNDADORES GOLF, CAP CANA



ACCESOS VIALES



PUNTA MAJAGUA 151A

LOCALIZACIÓN

SIN ESCALA

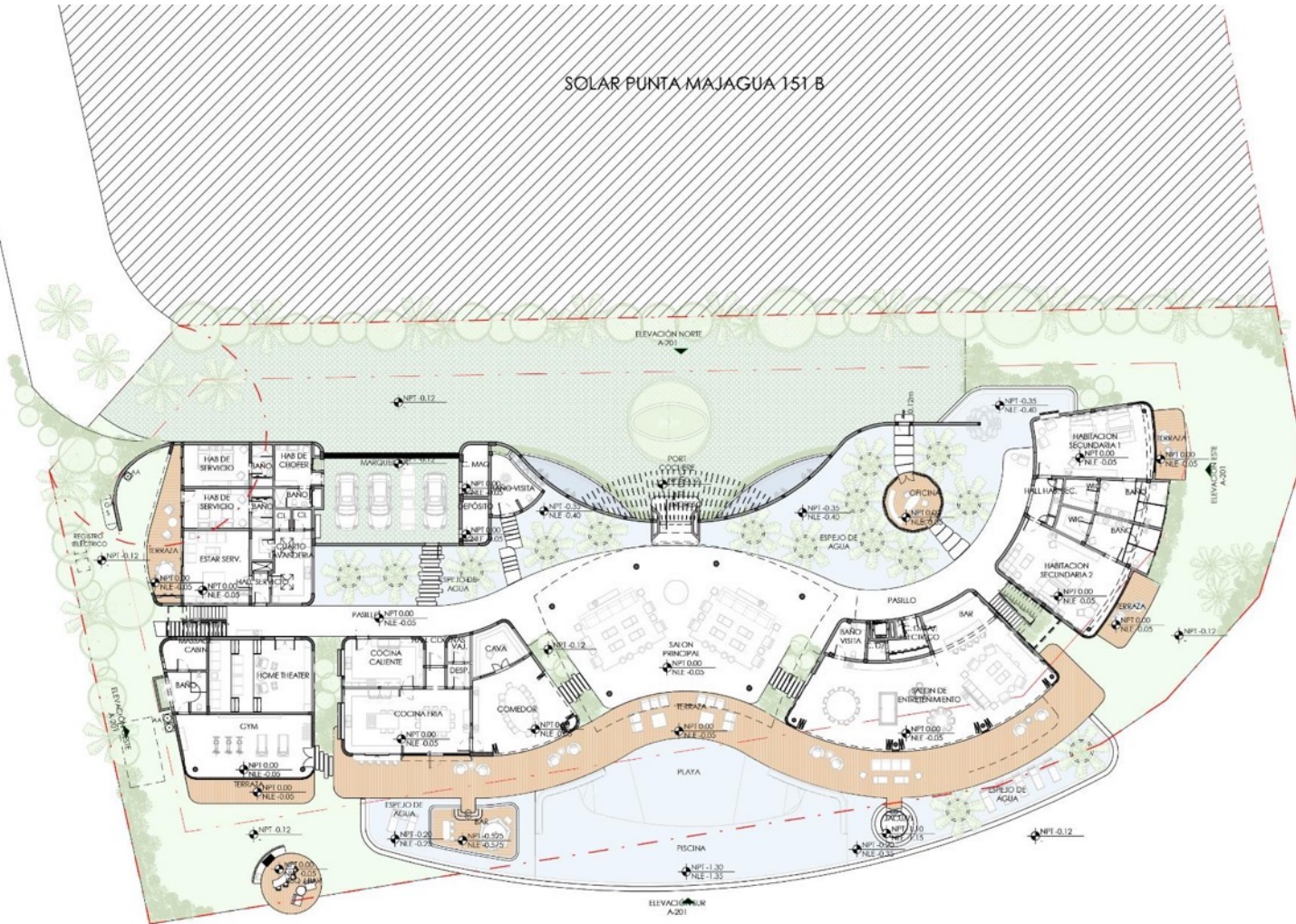


PUNTA MAJAGUA 151 A

LOCALIZACIÓN

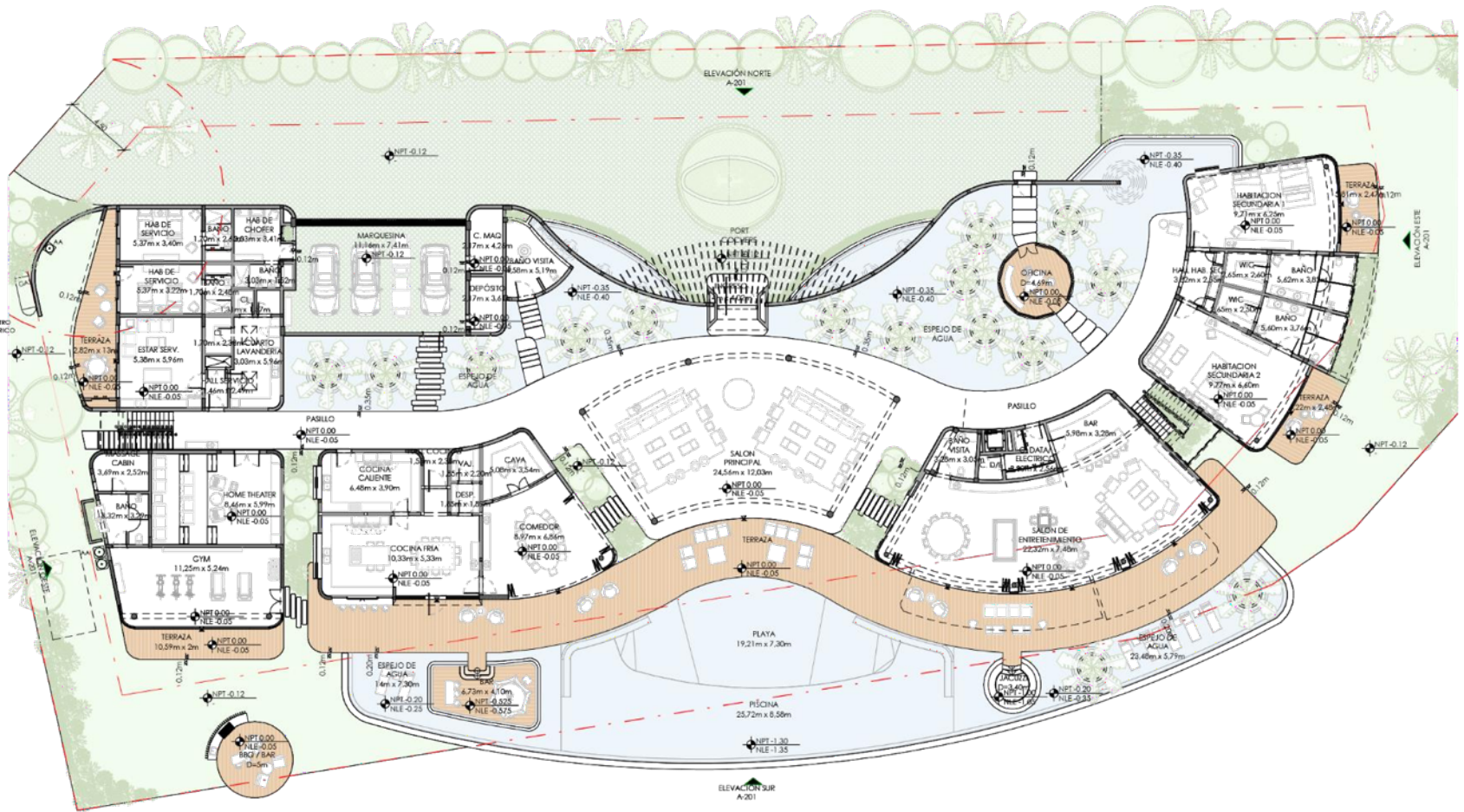
SIN ESCALA

SOLAR PUNTA MAJAGUA 151 B



PLANTA DE CONJUNTO

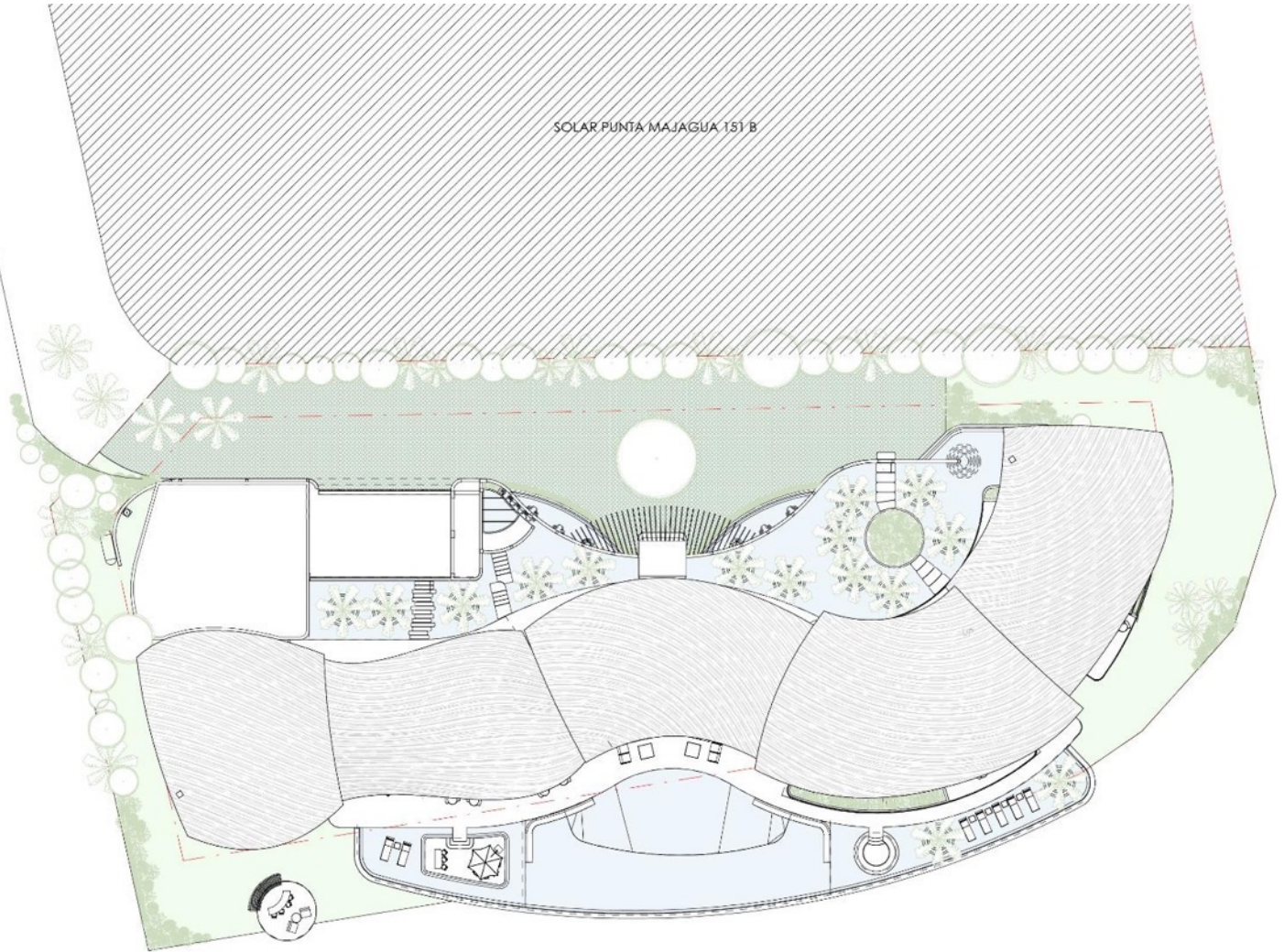
NO ESCALA



PRIMER NIVEL

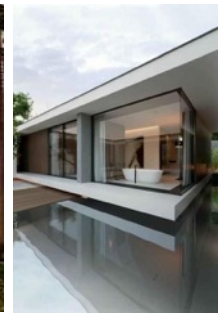
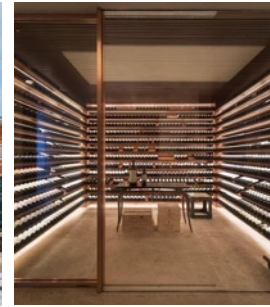
NO ESCALA

SOLAR PUNTA MAJAGUA 151 B



PLANTA DE TECHO

NO ESCALA



PANEL DE IMAGENES.

SIN ESCALA



PERSPECTIVAS

SIN ESCALA



PERSPECTIVAS

SIN ESCALA

FIRST FLOOR
1,805.14 m²

POOL
626.64 m²

PORT COCHERE 
 ENTRADA  
 ESPEJO DE AGUA 
 ESCALERA AUTOPORTANTE 
 BAÑO DE VISITA 
 SALON PRINCIPAL    
 COMEDOR PRINCIPAL    
 COCINA PRINCIPAL    
 CAVA   
 OFICINA  
 HABITACIONES DE VISITAS INDEP.    
 GIMNASIO   
 JARDIN YOGA   
 CABINA MASAJE 
 ELEVADOR
 HOME THEATER
 SALON DE ENTRETENIMIENTO/ BAR    
 TRES AREAS DE TERRAZA    
 TERRAZA PRINCIPAL    
 COMEDOR DE PISCINA    
 PISCINA TIPO PLAYA    
 PISCINA SIN FIN    
 JACUZZI PARA 12 PERSONAS    
 ESPEJOS DE AGUA    
 AREA DE TUMBNAS    

ESCALERA DE HABITACION VISITA 
 ESCALERA HACIA HABITACION PRINCIPAL/ VISITA   
 ASIENTOS DE PISCINA   
 AREA DE BAR EN PISCINA CON COMEDOR    
 AREA DE BARBACOA/ BAR  
 AREA DE LAVADO
 AREA DE DESPENSA
 MARQUESINA DE 4 AUTOS
 HABITACIONES DE SERVICIOS INDEPENDIENTES 
 HABITACIONES DE CHOFERES INDEPENDIENTES
 ALMACENAMIENTO

SECOND FLOOR
509.62 m²

ESCALERA AUTOPORTANTE    
 ELEVADOR    
 CUATRO HABITACIONES VISITA    
 TERRAZA HABITACIONES VISITA    
 BAÑOS HABITACIONES VISITA
 CLOSETS HABITACIONES VISITA
 HABITACIONES MASTER    
 BAÑO MASTER    
 TERRAZA MASTER    
 DOS MASTER CLOSETS

ATRIBUTOS VISUALES

VISTA DE OCEANO 
 VISTA AL AGUA 
 VISTA JARDIN 
 VISTA AL CAMPO DE GOLF 

TOTAL ESPACIOS

23	50%
27	58%
23	50%
21	45%

DESCRIPCIÓN DE LA VILLA

- Cap Cana is a 30,000 acre, master-planned, multi-use luxury resort and real estate community located adjacent to the Punta Cana International Airport on the eastern tip of the Dominican Republic in the Caribbean.
- The community is fully operational with championship golf and yachting facilities, world-class hotels, pristine beaches, a variety of dining and retail establishments and numerous other amenities.
- Cap Cana is easily accessible to visitors either by air, ground or sea, from major gateways throughout the Americas and Europe through The Punta Cana International Airport, only ten minutes away from the property and serving 55 countries. By ground through the new highway “Autopista del Coral” connecting to Santo Domingo and La Romana.
- As of today Cap Cana has invested more than US\$800 million in infrastructure. These investment included the construction of 25 miles paved roads, water supply and waste water system capacity of 900,000 gallons per day; on-site power generation and distribution 14MW with 20MW back-up diesel generators and 62 miles of fiber-optic cable among other improvements.

CAPCANA – DESCRIPTION

Multiuse resort
Secure and easy-access location
Golf, Beach and Marina

Infrastructure
Services
Amenities



CAPCANA
REPUBLICA DOMINICANA

World-Class Destination
Quality of life- Fulfillment of
dreams

Investment
Opportunities

Master planned
Community

CAP CANA – MASTER PLAN





JUANILLO BEACH – CAP CANA



PUNTA ESPADA GOLF CLUB



MARINA CAP CANA



LOS ESTABLOS, CAP CANA